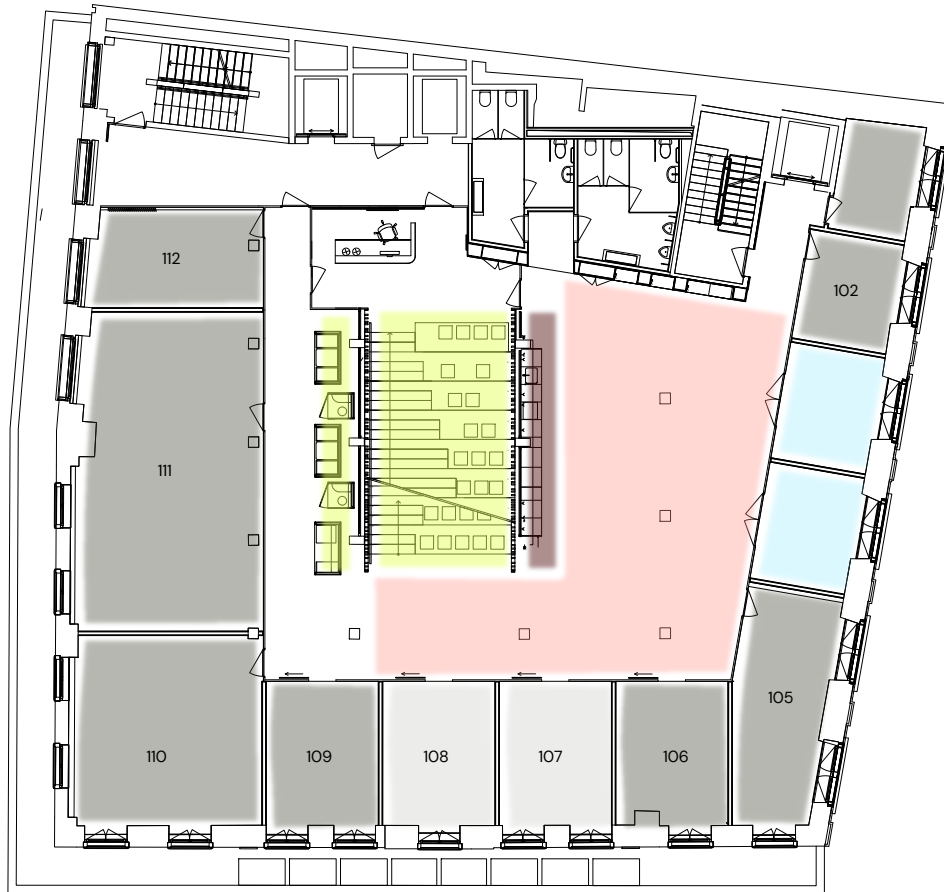


Floorplan Floor 1

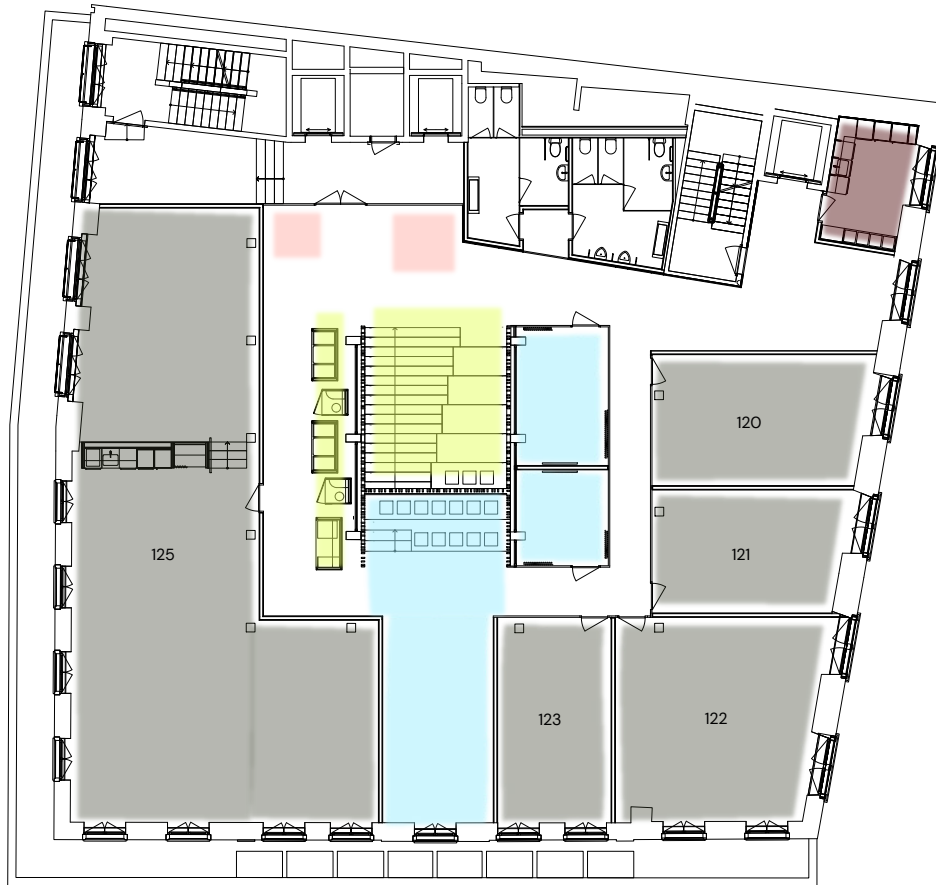
Basel Barfüsserplatz



- Flex Team
- Flex Rooms
- Flex Solo
- Shared Spaces
- Kitchen
- Lounge

Floorplan Floor 2

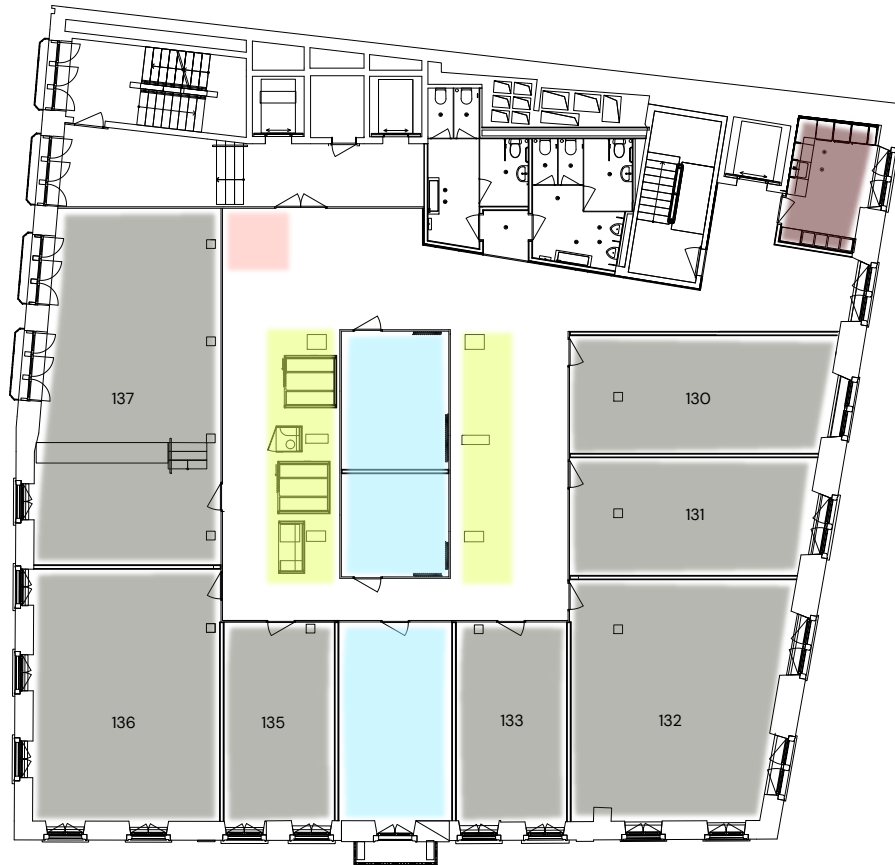
Basel Barfüsserplatz



- Flex Team
- Flex Rooms
- Flex Solo
- Shared Spaces
- Kitchen
- Lounge

Floorplan Floor 3

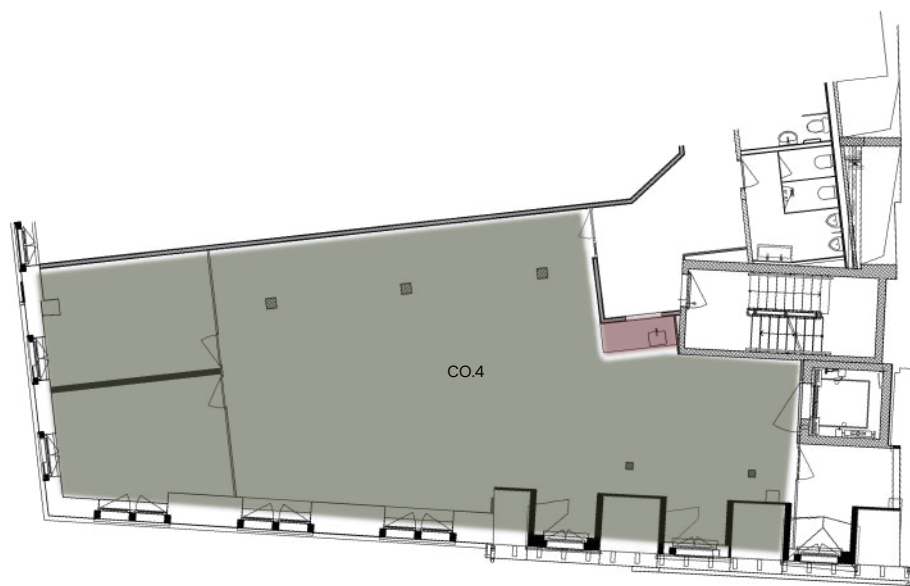
Basel Barfüsserplatz



- Flex Team
- Flex Rooms
- Flex Solo
- Shared Spaces
- Kitchen
- Lounge

Floorplan Floor 4

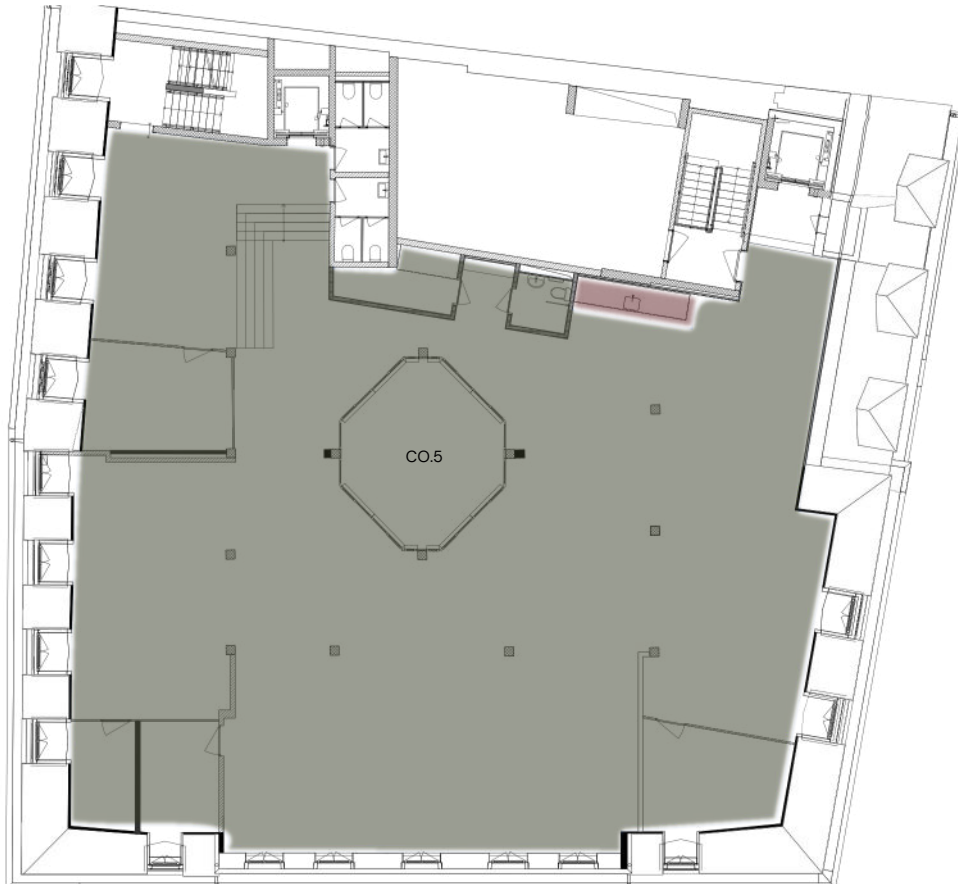
Basel Barfüsserplatz



- Flex Corporate
- Kitchen

Floorplan Floor 5

Basel Barfüsserplatz



- Flex Corporate
- Kitchen

Overview

Basel Barfüsserplatz

Room number	Room type	Room size	Room capacity*	Memberships*
102	Flex Team	13m ²	2-3	6
105	Flex Team	25m ²	4-6	12
106	Flex Pass	19m ²	4	4
107	Flex Solo	19m ²	4	4
108	Flex Solo	19m ²	4	4
109	Flex Pass	19m ²	4	4
110	Flex Team	43m ²	7-10	20
111	Flex Team	70m ²	12-16	32
112	Flex Team	20m ²	3-5	10
120	Flex Team	34m ²	6-8	16
121	Flex Team	28m ²	5-7	14
122	Flex Team	49m ²	8-10	20
123	Flex Team	28m ²	4-6	12
125	Flex Team	162m ²	27	54

**Finding the right size can be tricky nowadays, our team is happy to help you find the right room capacity for your teamsize, depending on your workstyle, workplace requirements and furniture needs.*

Overview

Basel Barfüsserplatz

Room number	Room type	Room size	Room capacity*	Memberships*
130	Flex Team	36m ²	6-8	16
131	Flex Team	34m ²	6-8	16
132	Flex Team	60m ²	10-14	28
133	Flex Team	27m ²	4-6	12
135	Flex Team	27m ²	4-6	12
136	Flex Team	57m ²	10-12	24
137	Flex Team	75m ²	13-16	32
CO.4	Flex Corporate	170m ²	15	30
CO.5	Flex Corporate	500m ²	43	86