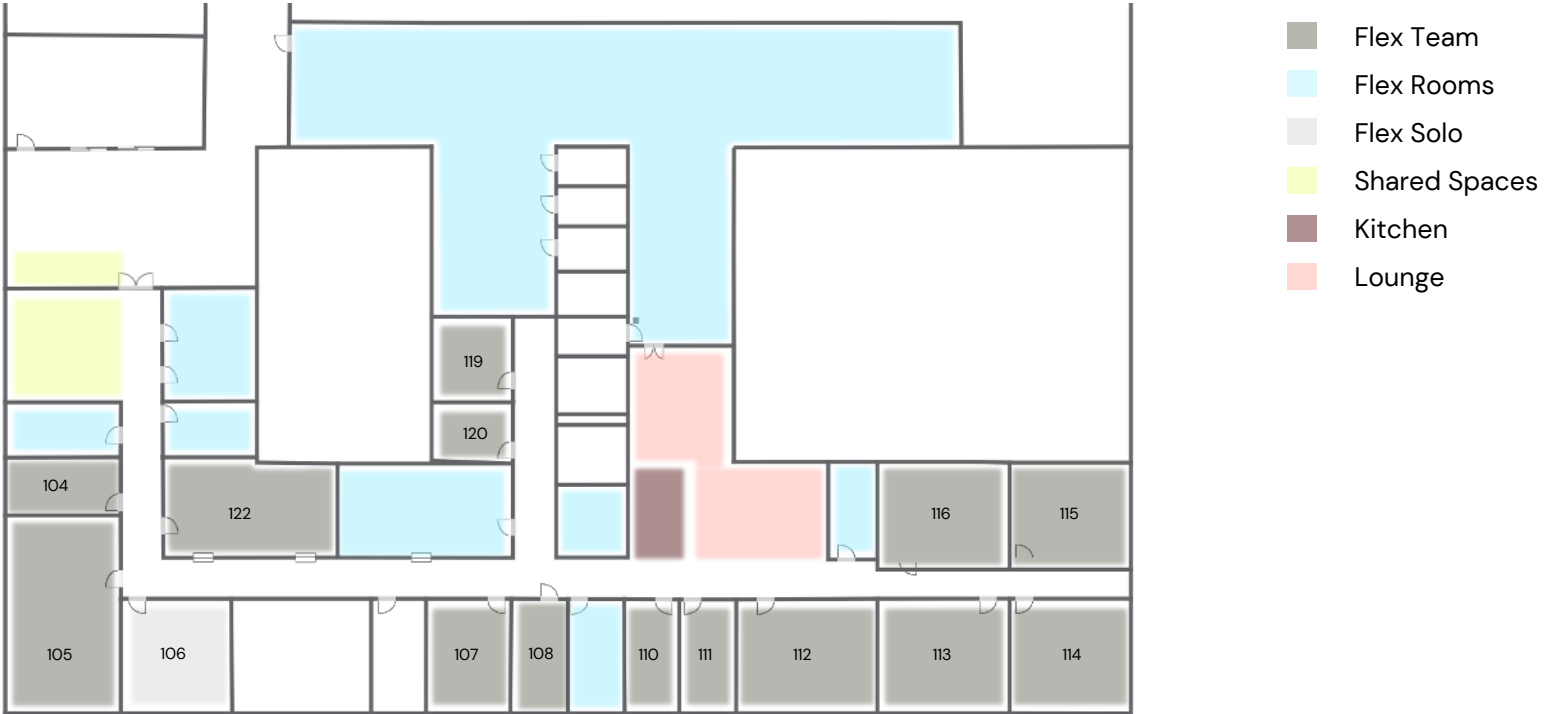


# Floorplan Floor 1

*Geneva Patio Plaza*



# Overview

## *Geneva Patio Plaza*

| Room number | Room type | Room size        | Room capacity* | Memberships* |
|-------------|-----------|------------------|----------------|--------------|
| 104         | Flex Team | 16m <sup>2</sup> | 2              | 4            |
| 105         | Flex Team | 54m <sup>2</sup> | 9              | 18           |
| 106         | Flex Solo | 30m <sup>2</sup> | 6              | 6            |
| 107         | Flex Team | 24m <sup>2</sup> | 4              | 8            |
| 108         | Flex Team | 16m <sup>2</sup> | 2              | 4            |
| 110         | Flex Team | 16m <sup>2</sup> | 2              | 4            |
| 111         | Flex Team | 16m <sup>2</sup> | 2              | 4            |
| 112         | Flex Team | 40m <sup>2</sup> | 6              | 12           |
| 113         | Flex Team | 40m <sup>2</sup> | 6              | 12           |
| 114         | Flex Team | 32m <sup>2</sup> | 5              | 10           |
| 115         | Flex Team | 32m <sup>2</sup> | 5              | 10           |
| 116         | Flex Team | 40m <sup>2</sup> | 6              | 12           |
| 119         | Flex Team | 17m <sup>2</sup> | 2              | 4            |
| 120         | Flex Team | 11m <sup>2</sup> | 1              | 2            |
| 122         | Flex Team | 45m <sup>2</sup> | 7              | 14           |

*\*Finding the right size can be tricky nowadays, our team is happy to help you find the right room capacity for your teamsize, depending on your workstyle, workplace requirements and furniture needs.*