

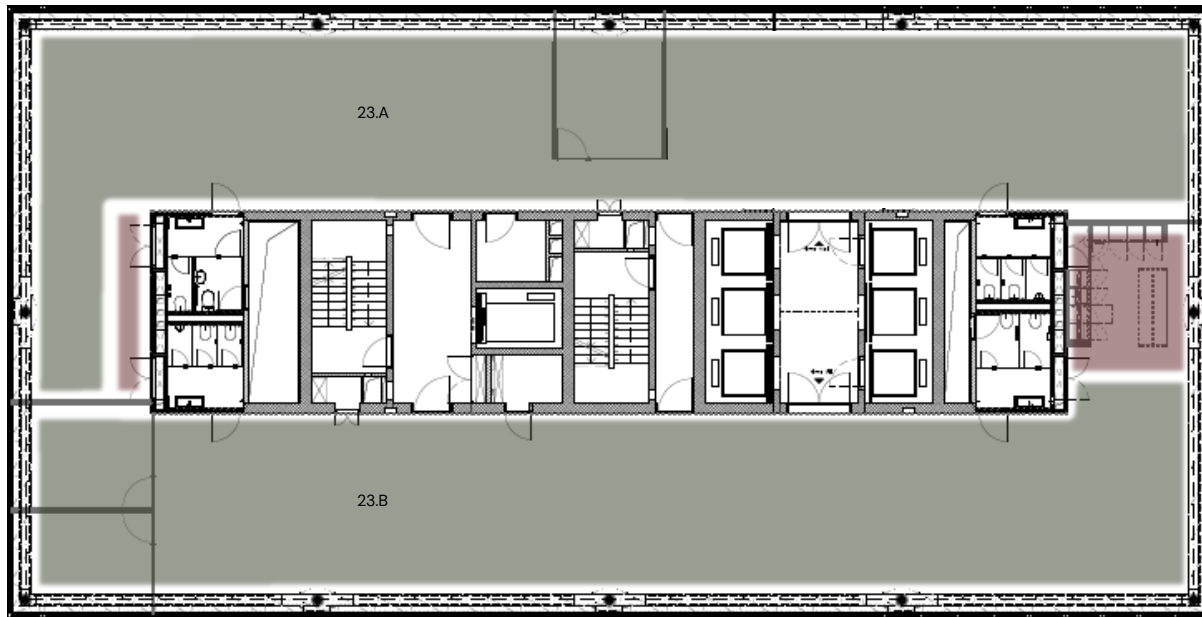
# Grundrissplan Etage 22

## *Basel Messeturm*



# Grundrissplan Etage 23

*Basel Messeturm*



- Flex Corporate
- Kitchen

# Grundrissplan Etage 24

## *Basel Messeturm*



- Flex Corporate
- Kitchen

# Grundrissplan Etage 25

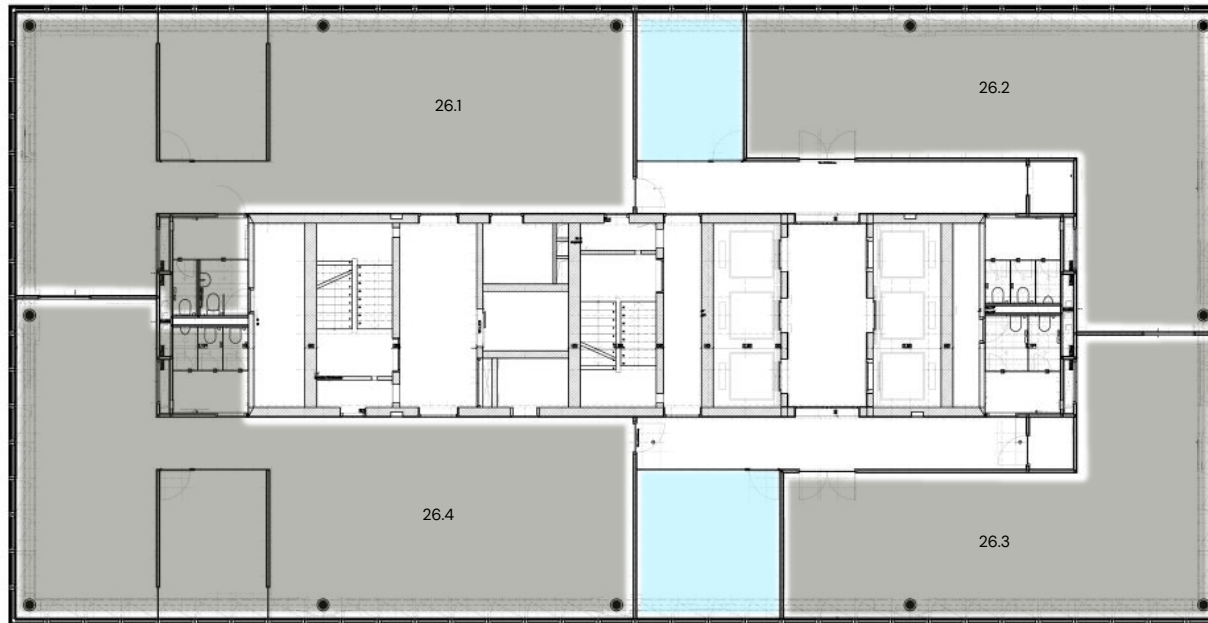
## *Basel Messeturm*



- Flex Team
- Flex Rooms
- Shared Spaces
- Kitchen
- Lounge

# Grundrissplan Etage 26

*Basel Messeturm*



- Flex Corporate
- Flex Rooms
- Optional Kitchen Position

# Übersicht

## Basel Messeturm

Raumnummer	Raumtyp	Raumgrösse	Raumkapazität*	Memberships*
22.03	Flex Team	27m <sup>2</sup>	4	8
22.04	Flex Team	17m <sup>2</sup>	2	4
22.05	Flex Team	23m <sup>2</sup>	3	6
22.07	Flex Team	8m <sup>2</sup>	1	2
22.08	Flex Team	8m <sup>2</sup>	1	2
22.09	Flex Team	8m <sup>2</sup>	1	2
22.10	Flex Team	8m <sup>2</sup>	1	2
22.12	Flex Team	17m <sup>2</sup>	2	4
22.13	Flex Team	27m <sup>2</sup>	4	8
22.14	Flex Team	28m <sup>2</sup>	4	8
22.15	Flex Team	40m <sup>2</sup>	6	12
22.16	Flex Team	27m <sup>2</sup>	4	8
23.A	Flex Corporate	335m <sup>2</sup>	30	60
23.B	Flex Corporate	335m <sup>2</sup>	30	60
24.0	Flex Corporate	670m <sup>2</sup>	60	120

# Übersicht

## Basel Messeturm

Raumnummer	Raumtyp	Raumgrösse	Raumkapazität*	Memberships*
25.02	Flex Team	26m <sup>2</sup>	4	8
25.04	Flex Team	59m <sup>2</sup>	10	20
25.05	Flex Team	26m <sup>2</sup>	4	8
25.06	Flex Team	26m <sup>2</sup>	4	8
25.07	Flex Team	26m <sup>2</sup>	4	8
25.08	Flex Team	16m <sup>2</sup>	2	4
25.09	Flex Team	16m <sup>2</sup>	2	4
25.10	Flex Team	32m <sup>2</sup>	5	10
25.13	Flex Team	26m <sup>2</sup>	4	8
25.15	Flex Team	8m <sup>2</sup>	1	2
25.16	Flex Team	16m <sup>2</sup>	2	4
25.17	Flex Team	8m <sup>2</sup>	1	2
26.01	Flex Corporate	162m <sup>2</sup>	20	40
26.02	Flex Corporate	106m <sup>2</sup>	16	32
26.03	Flex Corporate	95m <sup>2</sup>	14	28
26.04	Flex Corporate	168m <sup>2</sup>	20	40