

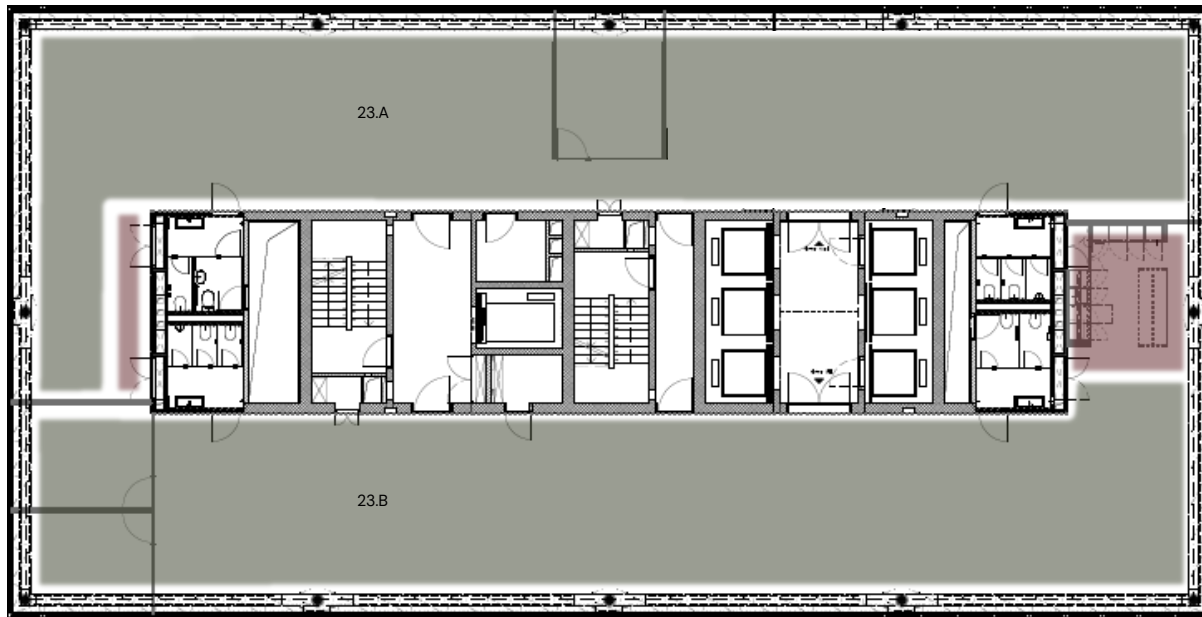
Floorplan Floor 22

Basel Messeturm



Floorplan Floor 23

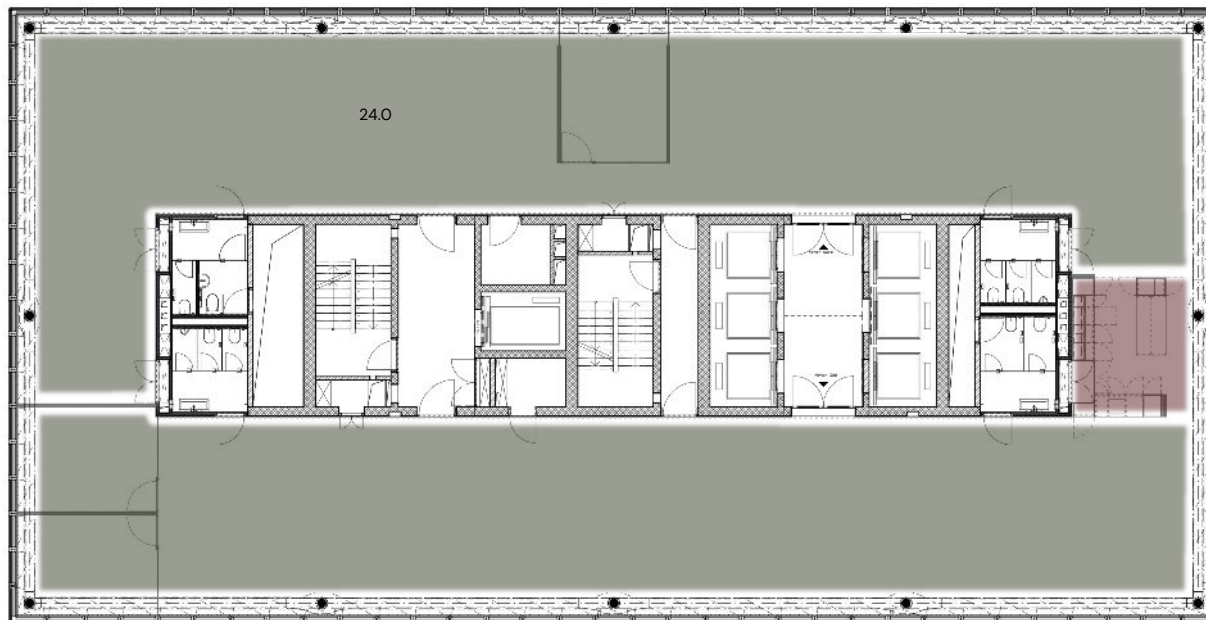
Basel Messeturm



- Flex Corporate
- Kitchen

Floorplan Floor 24

Basel Messeturm



- Flex Corporate
- Kitchen

Floorplan Floor 25

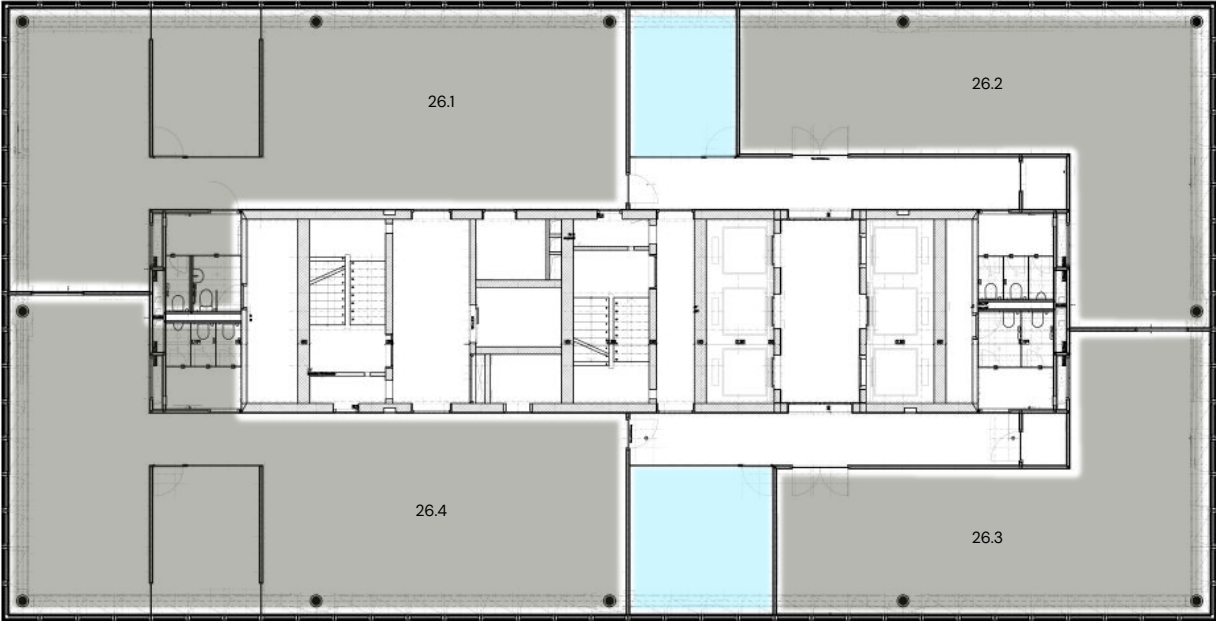
Basel Messeturm



- Flex Team
- Flex Rooms
- Shared Spaces
- Kitchen
- Lounge

Floorplan Floor 26

Basel Messeturm



- Flex Corporate
- Flex Rooms
- Optional Kitchen Position

Overview

Basel Messeturm

Room number	Room type	Room size	Room capacity*	Memberships*
22.03	Flex Team	27m ²	4	8
22.04	Flex Team	17m ²	2	4
22.05	Flex Team	23m ²	3	6
22.07	Flex Team	8m ²	1	2
22.08	Flex Team	8m ²	1	2
22.09	Flex Team	8m ²	1	2
22.10	Flex Team	8m ²	1	2
22.12	Flex Team	17m ²	2	4
22.13	Flex Team	27m ²	4	8
22.14	Flex Team	28m ²	4	8
22.15	Flex Team	40m ²	6	12
22.16	Flex Team	27m ²	4	8
23.A	Flex Corporate	335m ²	30	60
23.B	Flex Corporate	335m ²	30	60
24.0	Flex Corporate	670m ²	60	120

**Finding the right size can be tricky nowadays, our team is happy to help you find the right room capacity for your teamsize, depending on your workstyle, workplace requirements and furniture needs.*

Overview

Basel Messeturm

Room number	Room type	Room size	Room capacity*	Memberships*
25.02	Flex Team	26m ²	4	8
25.04	Flex Team	59m ²	10	20
25.05	Flex Team	26m ²	4	8
25.06	Flex Team	26m ²	4	8
25.07	Flex Team	26m ²	4	8
25.08	Flex Team	16m ²	2	4
25.09	Flex Team	16m ²	2	4
25.10	Flex Team	32m ²	5	10
25.13	Flex Team	26m ²	4	8
25.15	Flex Team	8m ²	1	2
25.16	Flex Team	16m ²	2	4
25.17	Flex Team	8m ²	1	2
26.01	Flex Corporate	162m ²	20	40
26.02	Flex Corporate	106m ²	16	32
26.03	Flex Corporate	95m ²	14	28
26.04	Flex Corporate	168m ²	20	40

**Finding the right size can be tricky nowadays, our team is happy to help you find the right room capacity for your teamsize, depending on your workstyle, workplace requirements and furniture needs.*