

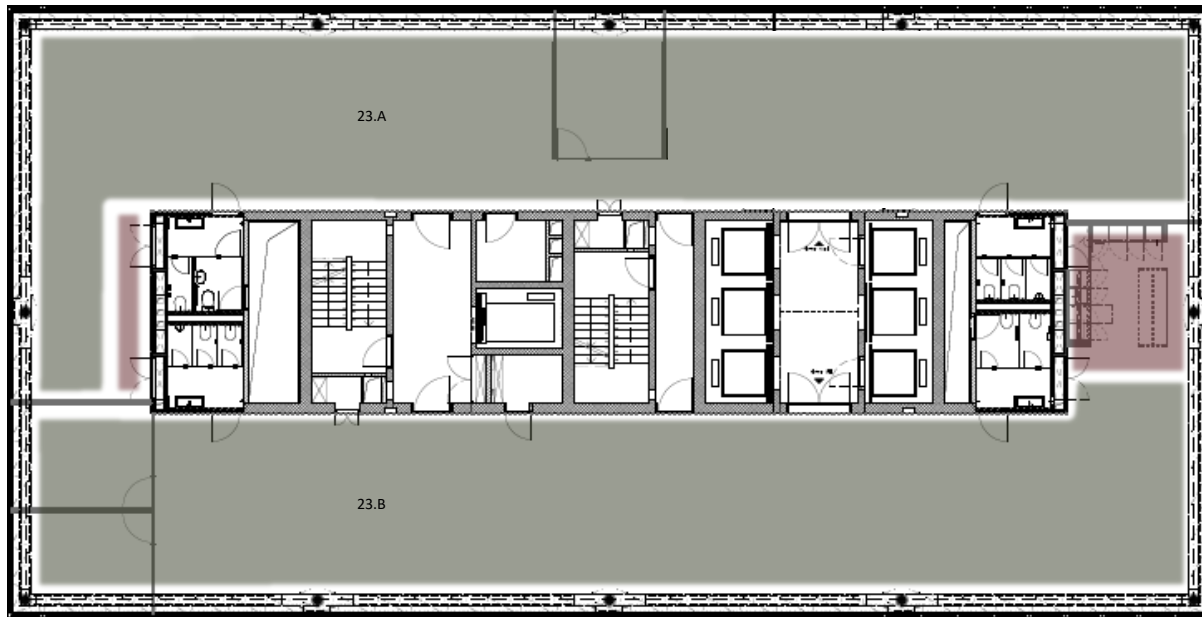
Grundrissplan Etage 22

Basel Messeturm



Grundrissplan Etage 23

Basel Messeturm



- Flex Corporate
- Kitchen

Grundrissplan Etage 24

Basel Messeturm



- Flex Corporate
- Kitchen

Grundrissplan Etage 25

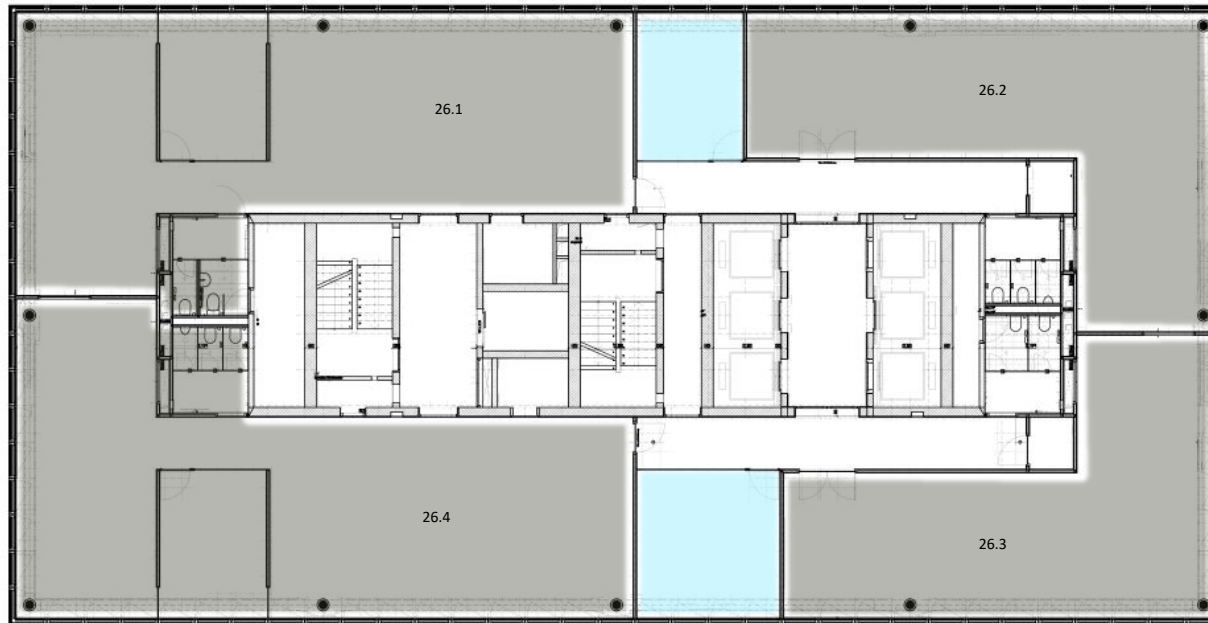
Basel Messeturm



- Flex Team
- Flex Rooms
- Shared Spaces
- Kitchen
- Lounge

Grundrissplan Etage 26

Basel Messeturm



- Flex Corporate
- Flex Rooms

Übersicht

Basel Messeturm

Raumnummer	Raumtyp	Raumgrösse	Raumkapazität*	Memberships*
22.03	Flex Solo	27m ²	6	6
22.04	Flex Team	17m ²	3-4	8
22.05	Flex Team	23m ²	4-5	10
22.07	Flex Team	8m ²	1-2	4
22.08	Flex Team	8m ²	1-2	4
22.09	Flex Team	8m ²	1-2	4
22.10	Flex Team	8m ²	1-2	4
22.12	Flex Team	17m ²	3-4	8
22.13	Flex Team	27m ²	4-6	12
22.14	Flex Team	28m ²	4-6	12
22.15	Flex Team	40m ²	7-9	18
22.16	Flex Team	27m ²	4-6	12
23.A	Flex Corporate	335m ²	34	68
23.B	Flex Corporate	335m ²	34	68
24.N	Flex Corporate	300m ²	30	60
24.S	Flex Corporate	370m ²	37	74

Übersicht

Basel Messeturm

Raumnummer	Raumtyp	Raumgrösse	Raumkapazität*	Memberships*
25.02	Flex Team	27m ²	4-6	12
25.04	Flex Team	60m ²	10-12	24
25.05	Flex Team	27m ²	4-6	12
25.06	Flex Team	27m ²	4-6	12
25.07	Flex Team	27m ²	4-6	12
25.08	Flex Team	17m ²	3-4	8
25.09	Flex Team	17m ²	3-4	8
25.10	Flex Team	32m ²	5-7	14
25.13	Flex Team	27m ²	4-6	12
25.15	Flex Team	8m ²	1-2	4
25.16	Flex Team	12m ²	2-3	6
25.17	Flex Team	8m ²	1-2	4
26.01	Flex Corporate	162m ²	20	40
26.02	Flex Corporate	106m ²	16	32
26.03	Flex Corporate	95m ²	14	28
26.04	Flex Corporate	168m ²	20	40

**Finding the right size can be tricky nowadays, our team is happy to help you find the right room capacity for your teamsize, depending on your workstyle, workplace requirements and furniture needs.*